

- Available in Bottom and Centerline Closure
- Tight shut-off even on trapped solids
- Built-in over-pinch protection
- Positive opening tabs standard on all sleeves
- Full, flat-faced reinforced rubber flanges, eliminates need for gaskets
- Face-to-face values equal to industry standards

The Series 1200 Pinch Valve features a simple, lightweight, open-frame design which allows for easy visual verification of sleeve position. Available in double-acting, fail-open or fail-closed configurations, the Series 1200 can be fitted with pneumatic or electric actuators and pneumatic or electro-pneumatic position controllers.

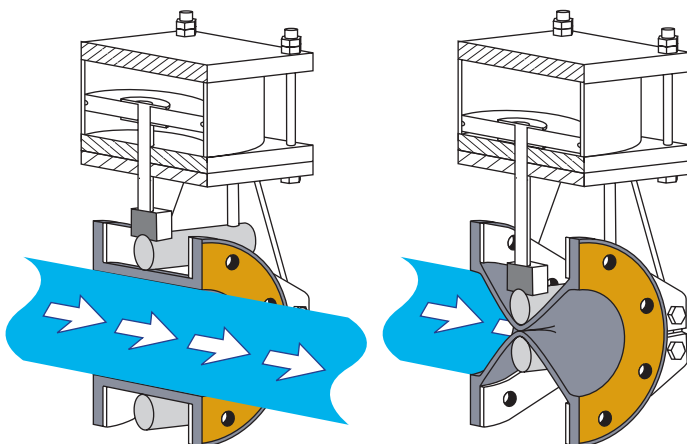
Series 1200 Pinch Valves can be fitted with pre-pinched or reduced port sleeves for precise flow control. Funnel port sleeves are recommended for high pressure drop applications. A wide range of elastomers are available to suit most service conditions.



Typical Applications

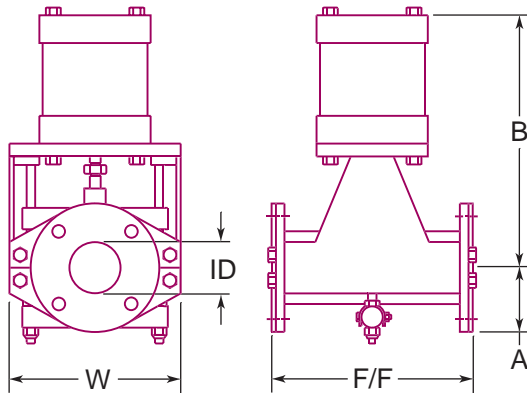
Waste and Water Treatment - Mine Slurries -
Chemicals - Cement - Pulp and Paper

The standard body of the Series 1200 Valve is constructed of carbon steel, but lightweight aluminum and corrosion resistant stainless steel are also available.



Series 1200 Pinch Valves provide excellent flow control compared to other valves due to their simple yet effective design.

Two pinch bars squeeze the flexible rubber sleeve, allowing the Series 1200 Valve to achieve a variable and stable flow rate. Fully open, the valve allows for full, straight through flow. Fully closed, the Series 1200 Valve maintains complete closure, with no leakage in either direction.



For engineering specifications or when placing your order, please provide the following information:

- Flange Drilling ANSI 125 ANSI 300
 PN 6 PN 10
 PN 16 BS 10
 Other

ID ¹	1	1-1/2	2	2-1/2	3	4	6	8	10	12	14	16	18	20	24
F/F ¹	7-1/4	8-3/4	10	10-7/8	11-3/4	13-7/8	17-3/4	21-3/8	26-1/2	29	35	40	45	50	60
W ¹	6	6-1/2	8	9	10	11-3/4	15-1/2	19	25	28	31-3/8	37	40	44	51-3/4
A ¹	2-1/4	2-1/2	3	3-1/2	3-3/4	4-1/2	5-1/2	6-3/4	8	9-1/2	10-1/2	11-3/4	12-1/2	13-3/4	16
B ¹	-----Varies according to actuator selection.-----														
Max. Work Pressure ²	150	150	150	150	150	150	125	125	125	100	75	50	50	50	50
Weight ³ (est.)	-----Varies according to actuator selection.-----														

1 - inches 2 - psi 3 - pounds

Dimensions can be revised to suit custom specifications.

Elastomer Selection Guide

- Ethylene Propylene Rubber (EPDM)**
Most effective for applications involving water, steam or diluted acids.
- Viton™ (FKM)**
Resists solvents, halogenated hydrocarbons, oxygen, weather, ozone, oils and chemicals.
- Buna N (NBR)**
Resistant to kerosene, moderate chemicals, fats, oils, grease and many hydrocarbons.
- Natural Rubber (NR)**
Good abrasion resistance, tensile strength and resiliency. Also suitable when dealing with organic acids, alcohols, ketones and most moderate chemicals.
- Hypalon™ (CSM)**
Resists strong acids and bases, ozone, weathering, heat and oxidizing chemicals.
- Butyl (CIIR)**
Good resistance to animal and vegetable fats, strong and oxidizing chemicals, oils, heat and greases.
- Neoprene (CR)**
Generally resistant to oil and grease, moderate chemicals, fats, many hydrocarbons and ozone. Resistant to barnacle growth.
- Teflon™ (AFMU)**
Excellent resistance to chemicals. Fair abrasion resistance.

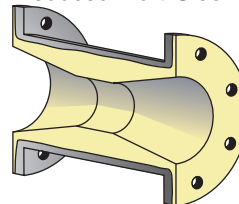
Options

- Actuator** - Pneumatic, hydraulic and electric.
- Solar Power Pack** - For hydraulic actuation.
- Solenoid Valve Control**
- Position Indicator / Transmitter**
- Positioner Control** - With 3-15 psi instrument air signal.
- Positioner and I/P Transducer Control** - With 4-20 mA instrument signal.
- Digital Positioner** - With HART communications protocol.
- Auxiliary Hand Wheel Override**
- Limit Switches**

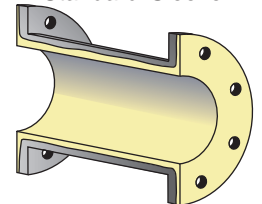
When placing your order, please indicate sleeve material by appending elastomer abbreviation (CR, NR, etc) to the model name.
IE: Series 1200-CR

Replacement Sleeves Styles for the Series 1200 Valve

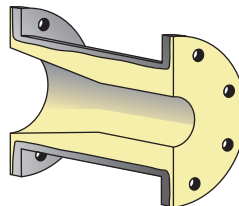
Reduced Port Sleeve



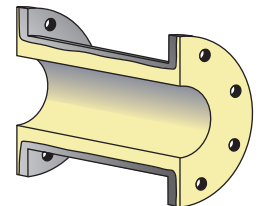
Standard Sleeve



Funnel Sleeve



Double Wall Sleeve



WARRANTY

All EVR products are guaranteed for one full year against defects resulting from faulty workmanship or materials. If any such product is found to be defective by reason of faulty workmanship or materials, upon written notice and return of the product, the defective product will be replaced by us free of charge, including the shipping charges for the replacement product. Claims for labour costs and other expenses required to replace such defective product, or to repair damage resulting from the use thereof will not be allowed by us. Our liability is limited to the price paid for the defective product. EVR Products shall not be bound by any warranty other than the above set forth unless such warranty shall be in writing. This literature is published in good faith and is believed to be reliable, however, EVR Products does not represent and/or warrant in any manner the above information and suggestions contained in this brochure. Data presented is the result of laboratory tests and field experience.

Distributed by:

ELASTO VALVE RUBBER PRODUCTS INC.

1691 Pioneer Road, Sudbury,
Ontario Canada P3G 1B2
Tel. (705)523-2026 - Fax. (705)523-2033
Toll Free 1-800-461-6331 (N.A.)
Website: www.evrproducts.com
E-mail: sales@evrproducts.com

ISO 9001 Certified

